

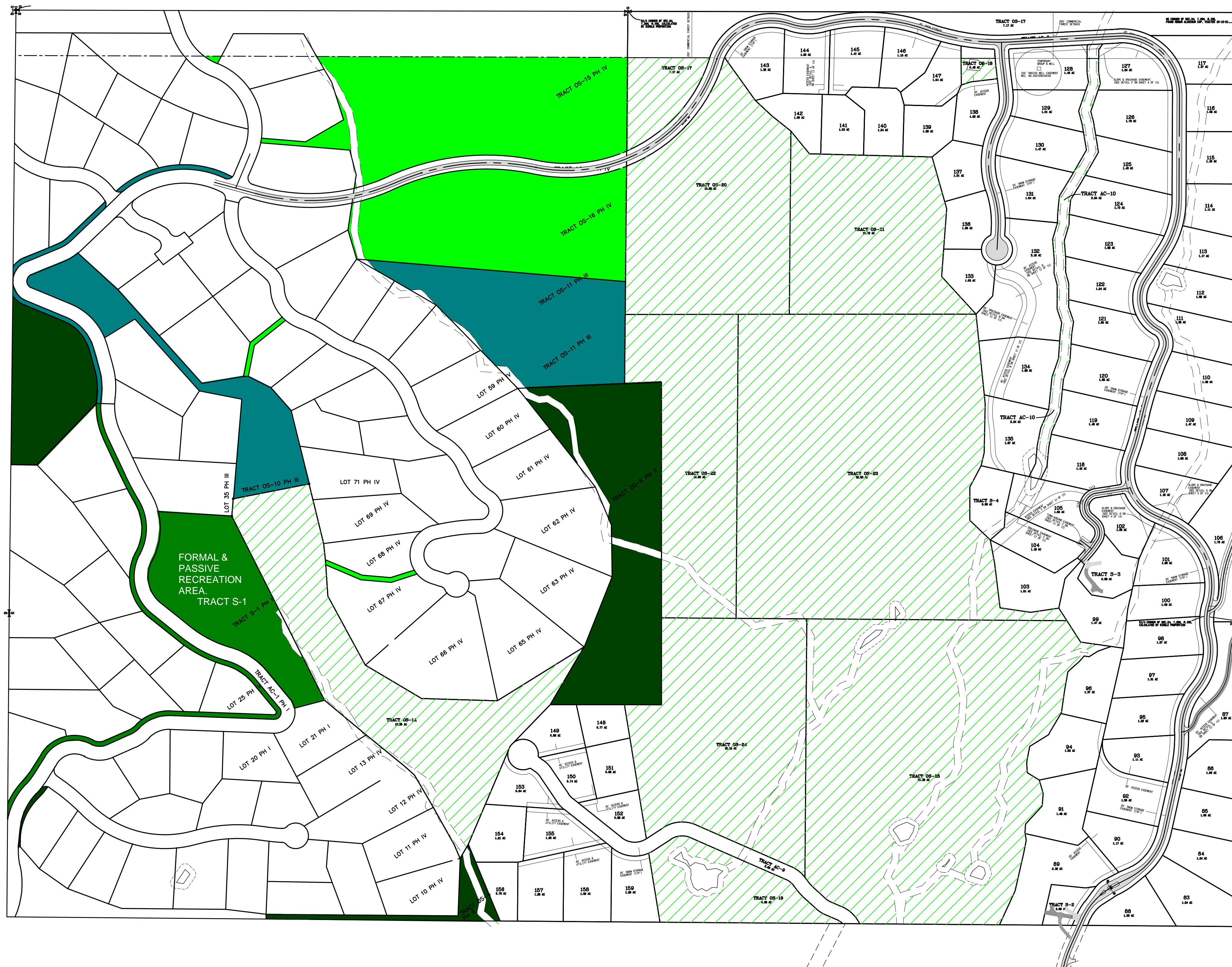
# FOREST RIDGE PHASES I - V

## OPEN SPACE AREAS EXHIBIT

**CONTOUR**  
ENGINEERING • LLC  
CIVIL ENGINEERS ~ SURVEYORS ~ LAND PLANNERS  
Phone: 253-857-5454 ~ Fax: 253-509-0044 ~ info@contourpllc.com  
Mailing Address: P.O. Box 949, Gig Harbor, WA 98335  
Physical Address: 4706 97th Street NW, Suite 100, Gig Harbor, WA 98332

**Encompass**  
ENGINEERING & SURVEYING

Western Washington Division  
165 NE Juniper Street, Suite 201 • Issaquah, WA 98027 • Phone: (425) 392-0250  
Eastern Washington Division  
407 Swiftwater Blvd. • Cle Elum, WA 98922 • Phone: (509) 674-7433



### OPEN SPACE NOTE

129.09 ACRES OF OPEN SPACE INCLUDES 13.2 ACRES OF OPEN SPACE IN TRACT OS-1A. THIS TRACT IS INCLUDED WITH THE PHASE V PLAT AS THE TRACT BOUNDARY IS BEING ADJUSTED. WITH PHASE V THE NET TOTAL OPEN SPACE FOR ALL PHASES OF THE DEVELOPMENT IS 191.68

### OPEN SPACE CALCULATION TABLE

	PHASE 1	21.73 ac. - 13.67 ac. = 8.06 ac. (SEE OPEN SPACE NOTE ABOVE)
	PHASE 2	16.62 ac.
	PHASE 3	14.16 ac.
	PHASE 4	34.13 ac.
	PHASE 5	141.276 ac.
GROSS TOTAL:		214.246 ac.

### (AREAS TAKEN OUT OF OPEN SPACE CALCULATION)

COMMERCIAL FOREST	16.317 ac.
WETLANDS, STREAMS, & ASSOCIATED BUFFERS	6.249 ac.

**NET TOTAL: 191.68 ac. (40.06%)**